

LE PARVIS DES OLIVIERS

La Maison Pour Tous

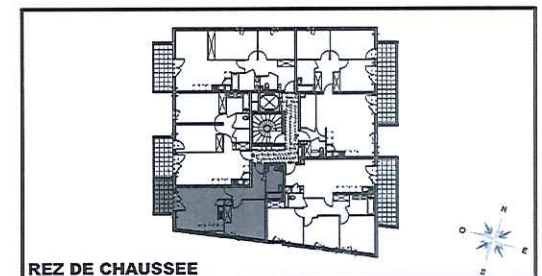
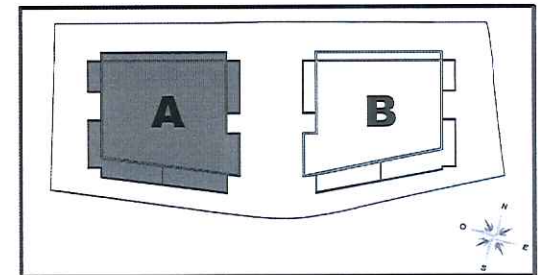
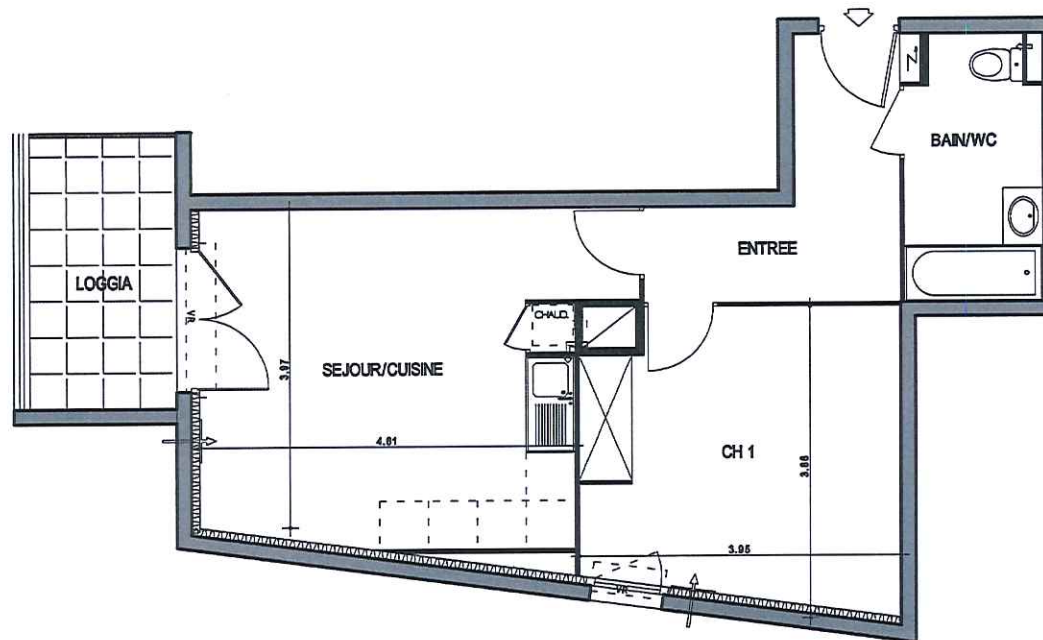


LOCATION - ACCESION

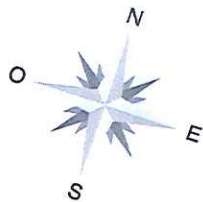
APPARTEMENT

T2C

BATIMENT A
N° 4 - RDC



REZ DE CHAUSSEE



- entrée d'air
- soffites ou faux plafonds

SURFACES HABITABLES

Entrée	6.50
Séjour / Cuisine	20.11
Chambre 1	13.72
Bain / Wc	5.32
WC	1.95

TOTAL	45.65
Loggia	6.10